

**The 50th Annual International Conference  
The Joseph Conrad Society (UK)  
St Mary's University, Twickenham  
6-7 July 2023**

**CONRAD IN SOUTHEAST ASIA:  
AN ILLUSTRATIVE TOUR**

**Sree Kumar**

7 JULY 2023



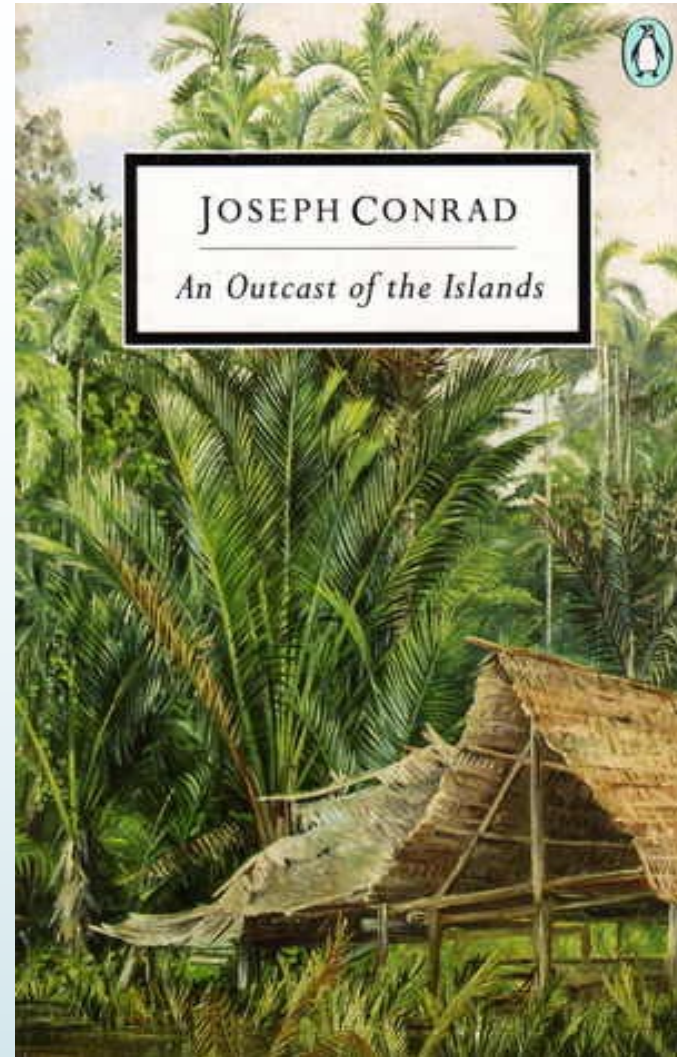
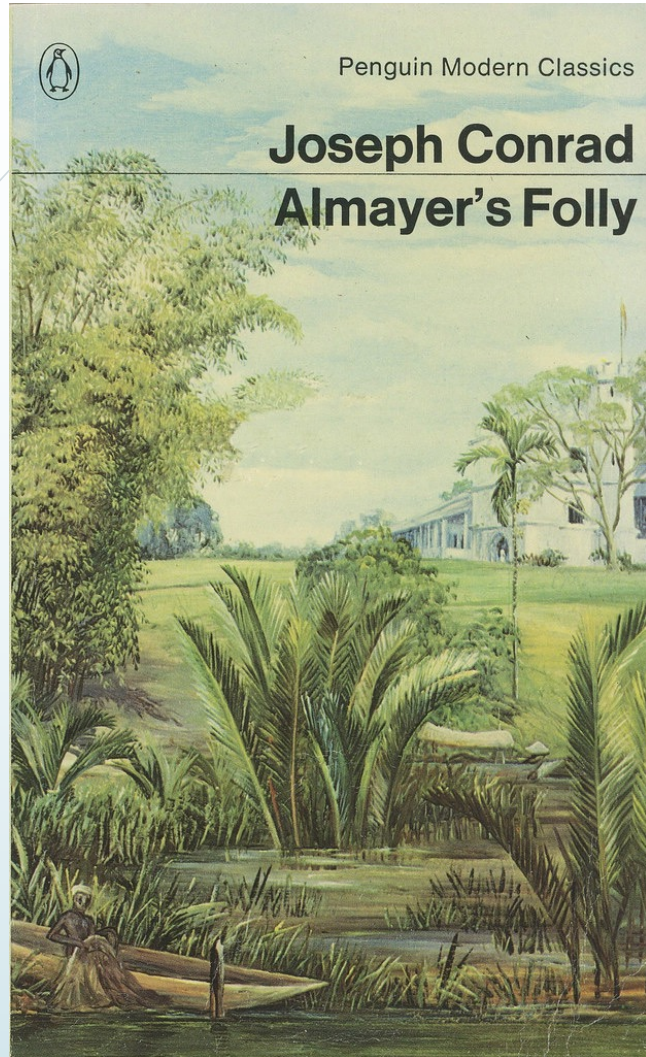
Conrad's Southeast Asian stories touched on various historical features of the region. There are references to Anglo-Dutch rivalry, the presence of Arab trading networks and Chinese merchants and coolies, the influence of the Portuguese, and the role of British trading houses, all embedded within narratives interlaced with the local Malay population. He had already fathomed at that time that the region was a melting pot of cultures and ethnic groups. This presentation of photographs of the period of his stories highlights the various locations that he wrote about and the peoples that he encountered. It will draw the reader and the researcher into the realm of a time which has long gone and provide a pictorial context to his writing. It concludes with a view of what these places look like today.

**“My task which I am trying to achieve is, by the power of the written word to make you hear, to make you feel – it is before all, to make you **see**.”**

**Joseph Conrad in the Preface to the Nigger of the Narcissus**

## Conrad's Selected Southeast Asia Texts





## MAKASSAR



## Quay, Makassar 1880s



Source: KITLV

## Makassar 1890s



Source: Tropenmuseum

## Makassar 1900



Source: Tropenmuseum

## Buginese boats, 1900s



Source: Tropenmuseum

## BUITENZORG

## Buitenzorg Station 1880



Source: KITLV

### Chinese Quarter 1880



Source: KITLV

## Buitenzorg Laboratory 1900s



Source: Tropenmuseum

## Buitenzorg Gardens 1905



Source: KITLV

## Buitenzorg Gardens 1880s



Source: KITLV

# BATAVIA

## Batavia Port, 1896



Source: KITLV

## Batavia , 1880s



Source: J Paul Getty Museum

## Hotel des Indies, 1870s



Source: Met Museum



Source: Indra Mulya

## Warehouse, Batavia 1900



Source: Rijksmuseum

## Studhuys, 1890



Source: Tropenmuseum

## Batavia 1900s



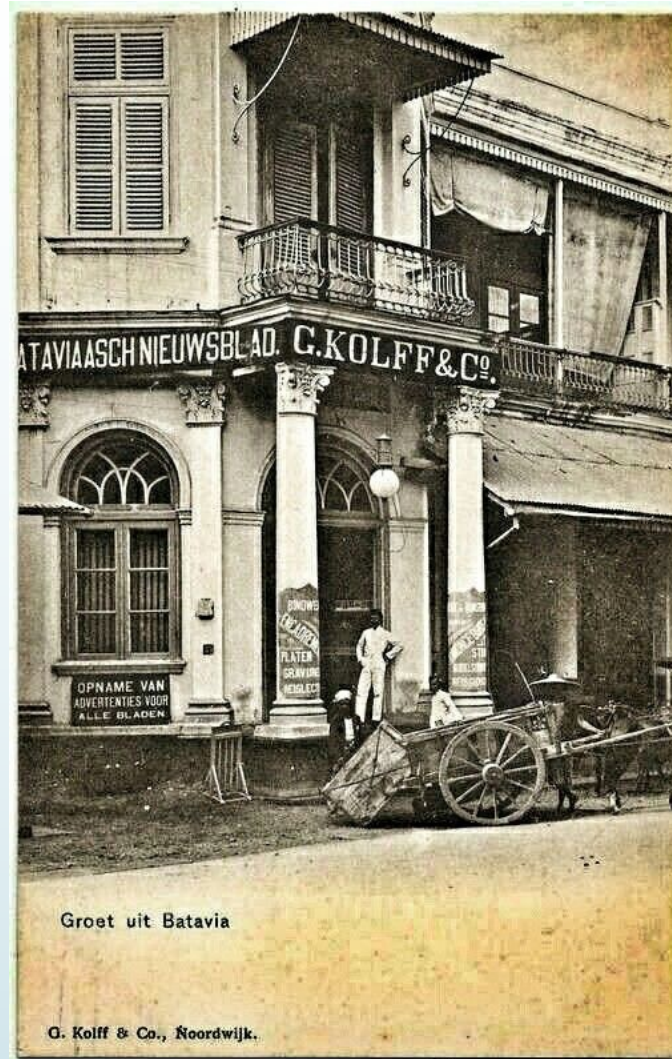
Source: Tropenmuseum

## Batavia 1890s



Source: Tropenmuseum

# Batavia, 1900s



Groet uit Batavia

G. Kolff & Co., Noordwijk.

Source: KITLV

## Harmonie Gardens, 1890



Source: KITLV

## Village in Batavia 1870s



Source: Met Museum

## European Couple, 1890



Source: KITLV

## Dutch Officer 1890



Source: KITLV

## Indos, 1900s



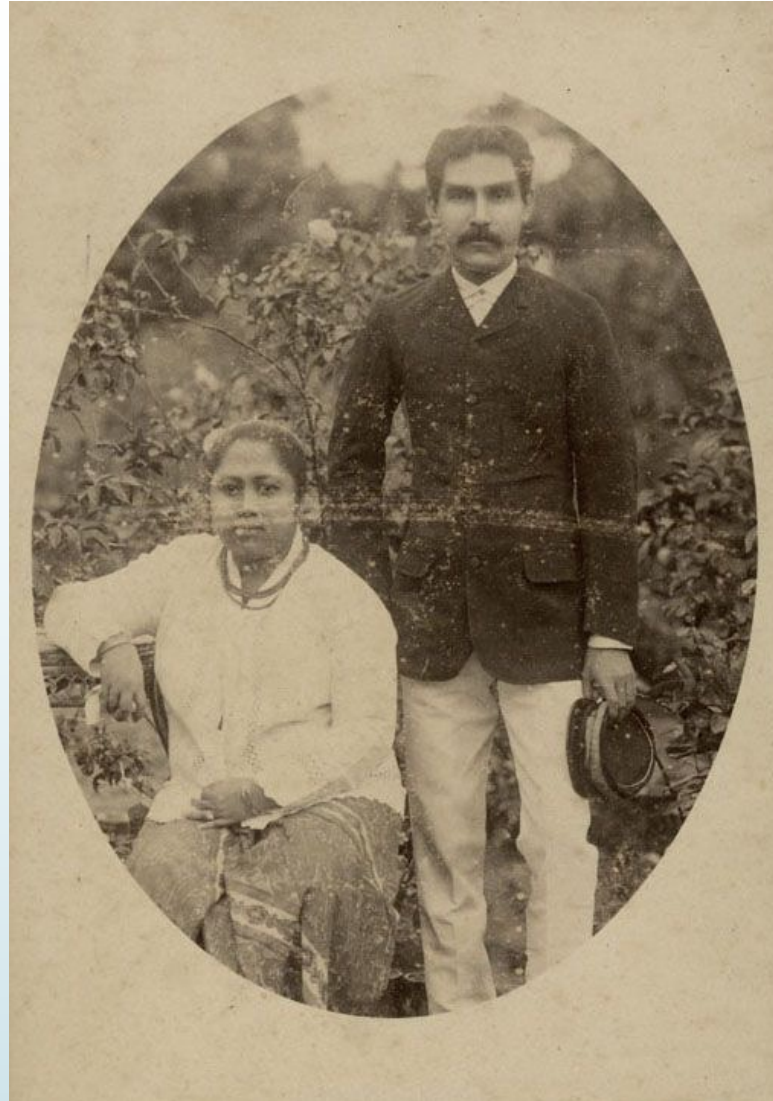
Source: Tropenmuseum

## Indo-Dutch Family 1900



Source: Rommel

## Indo-European Family 1890



Source: Rommel

## Arab with Dutch Officials 1890s



Collectie Prentenkabinet Universiteit Leiden

Source: KITLV

## Dutch Family 1890s

35



Source: Tropenmuseum

## Javanese Family 1890s



Source: Tropenmuseum

## Batavia mixed family, circa 1865

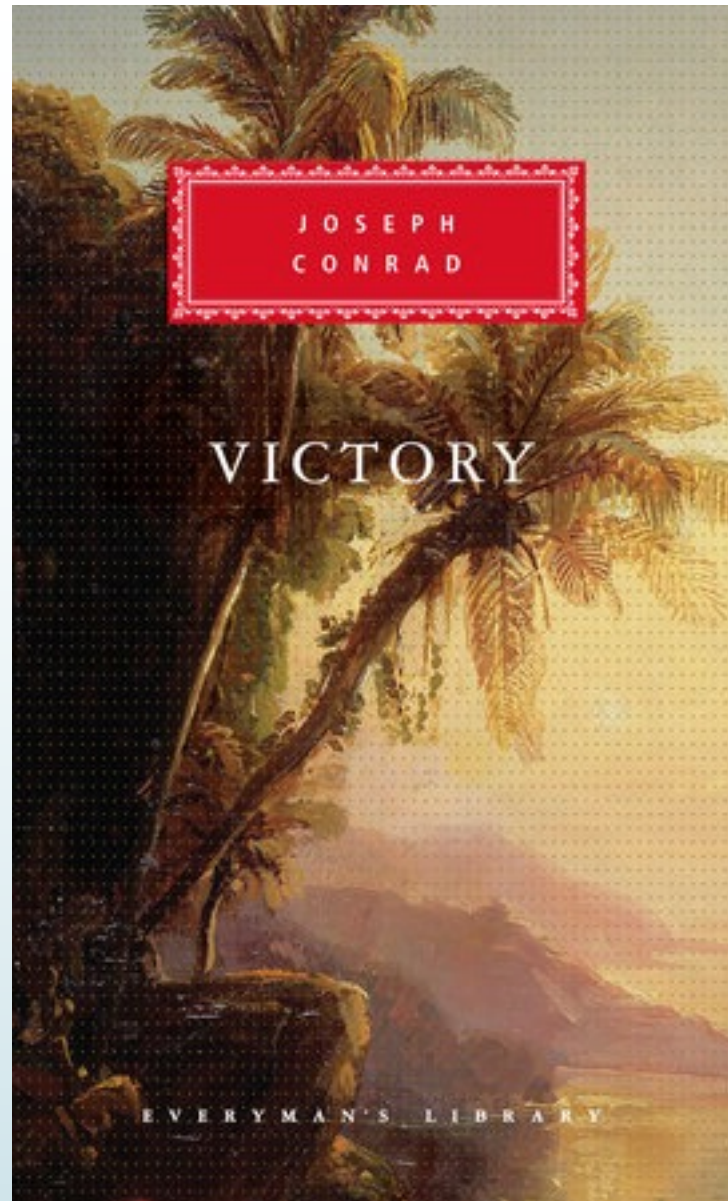


Source: Tropenmuseum

## Chinese Vendor, Batavia, 1880s



Source: Tropenmuseum





## SURABAYA



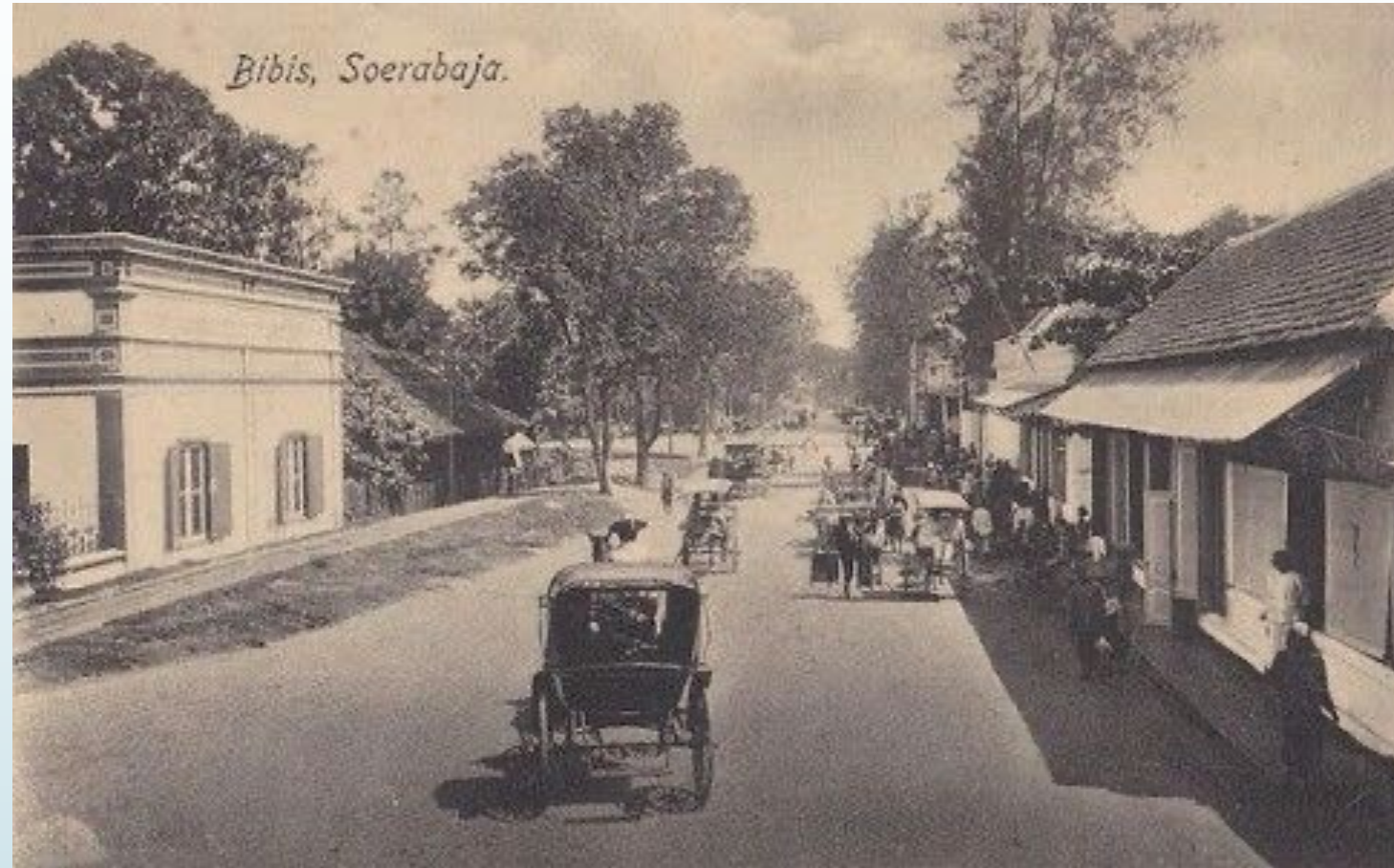
Source: KITLV

## Surabaya 1890



Source: KITLV

## Surabaya, 1880



Source: KITLV

## Resident's House, Surabaya 1880s



Source: Tropenmuseum, H. Salzwedel

## Surabaya, 1880



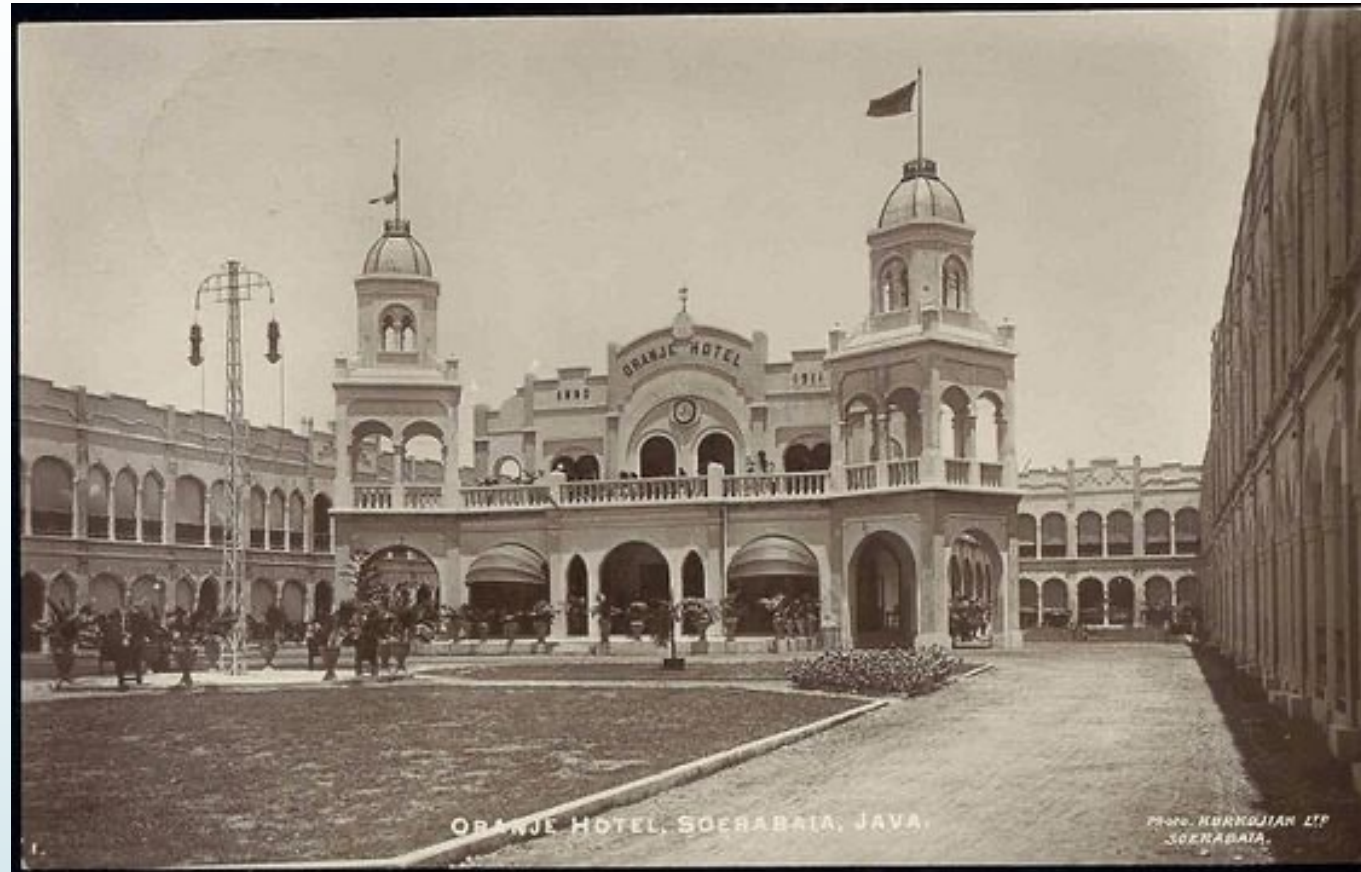
Source: Tropenmuseum

## Arab Quarter, Surabaya 1880s



Source: KITLV

## Hotel Oranje



Source: Tropenmuseum

## SEMARANG

## Semarang 1880



Source: Tropenmuseum, H Veen

## Semarang 1890



Source: KITLV

## Street in Semarang 1895



Source: KITLV

## Semarang 1895



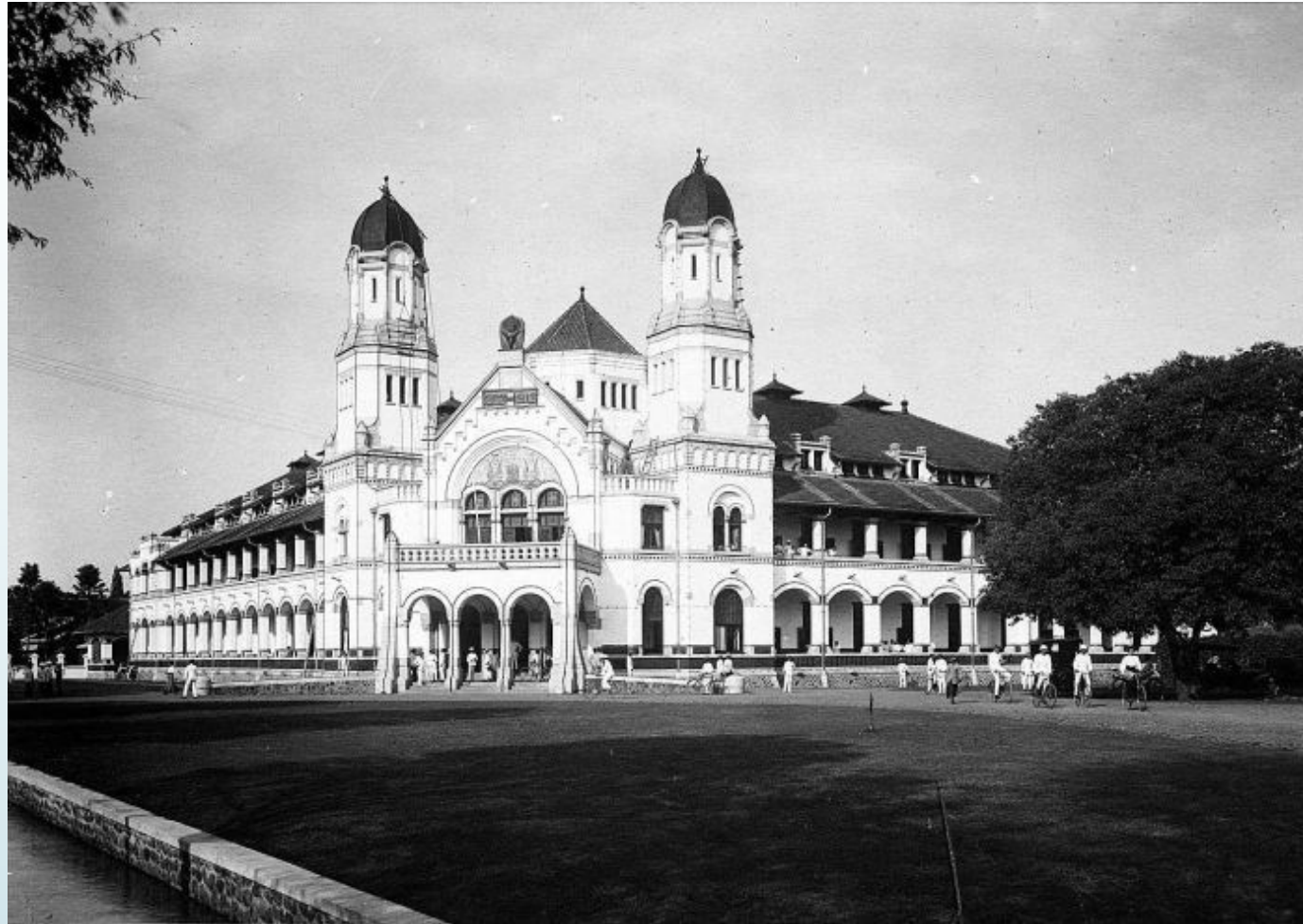
Source: KITLV

## Semarang 1880s



Source: Tropenmuseum

## Semarang 1907



Source: Creative Commons

## Indo-Europeans 1895



Source: KITLV

## BANJARMASIN

## Banjarmasin Harbour 1900



Source: KITLV

Source: KITLV

## Banjarmasin 1900



Source: KITLV

## Pulau Laut, 1901



Source:KITLV

## Coal Port 1900s

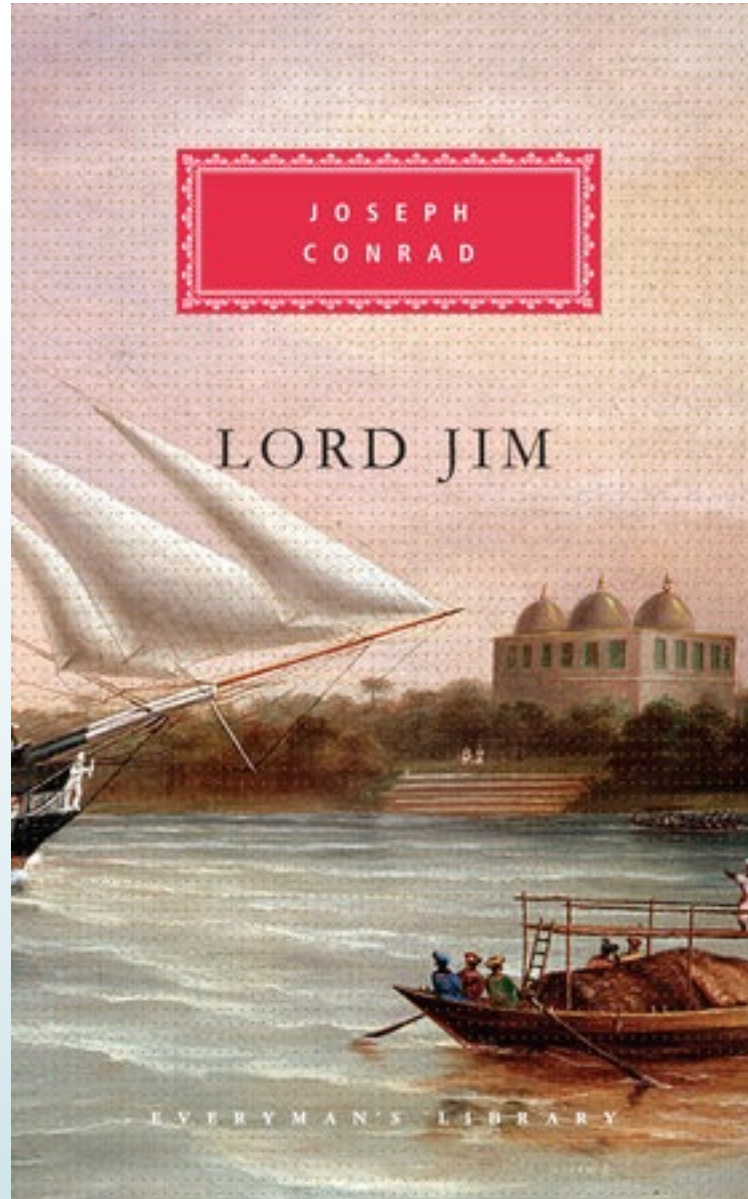


Source: Tropenmuseum

## Mail Boat 1905



Source: KITLV





## SAMARINDA

## Samarinda 1890s



Source: Tropenmuseum

## Samarinda 1900



Source: KITLV

## Samarinda Post Office 1905



Source: KITLV

## Samarinda 1905



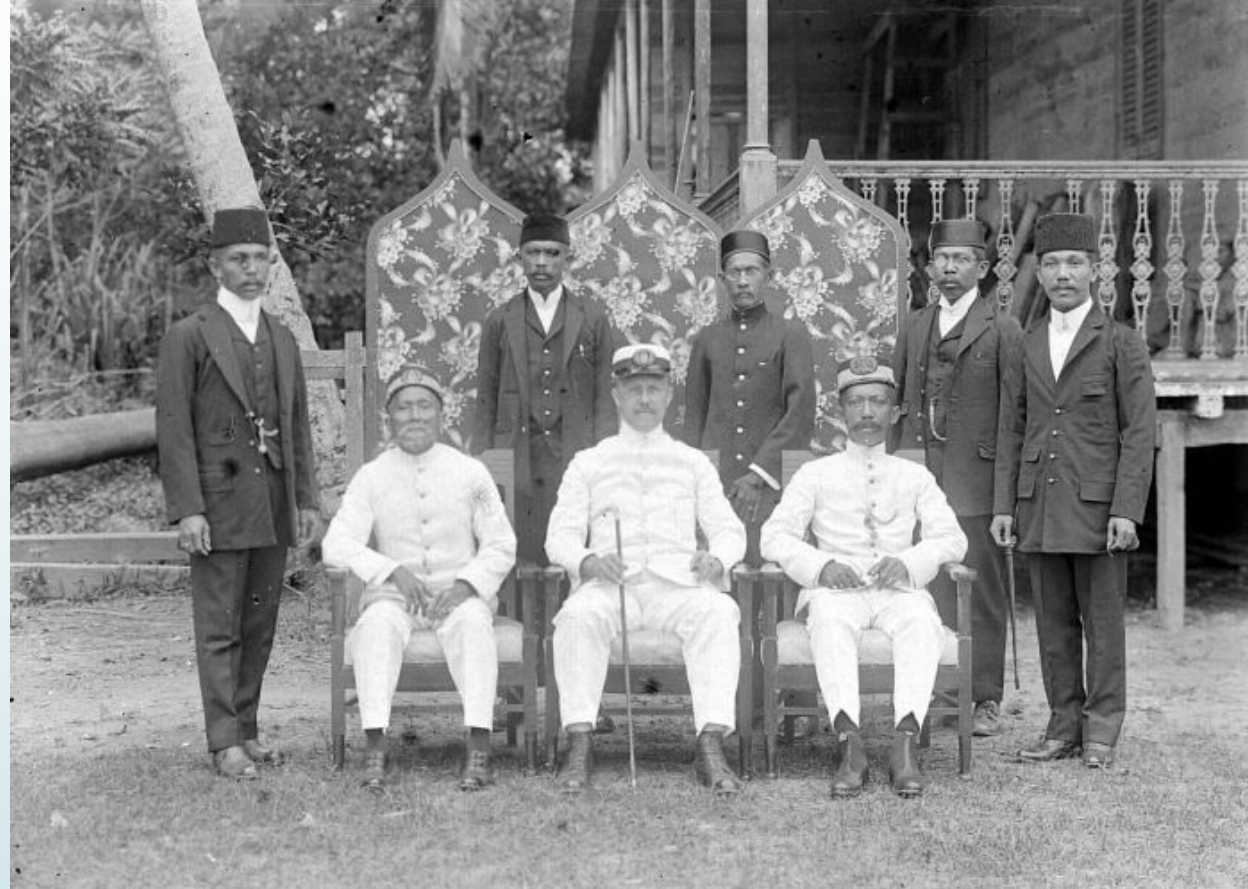
Source: KITLV

## Indo- Dutch Family 1905



Source: KITLV

## Dutch and Native Officials 1890



Source: KITLV

## Natives, East Kalimantan 1890s



Source: Tropenmuseum

**BERAU**

## Berau 1905



Source: Tropenmuseum

## Berau 1905



Source: Tropenmuseum

## Berau 1900s



Source: Tropenmuseum

## Tanjung Redeb 1900



Source: KITLV

## Natives, East Kalimantan 1890s

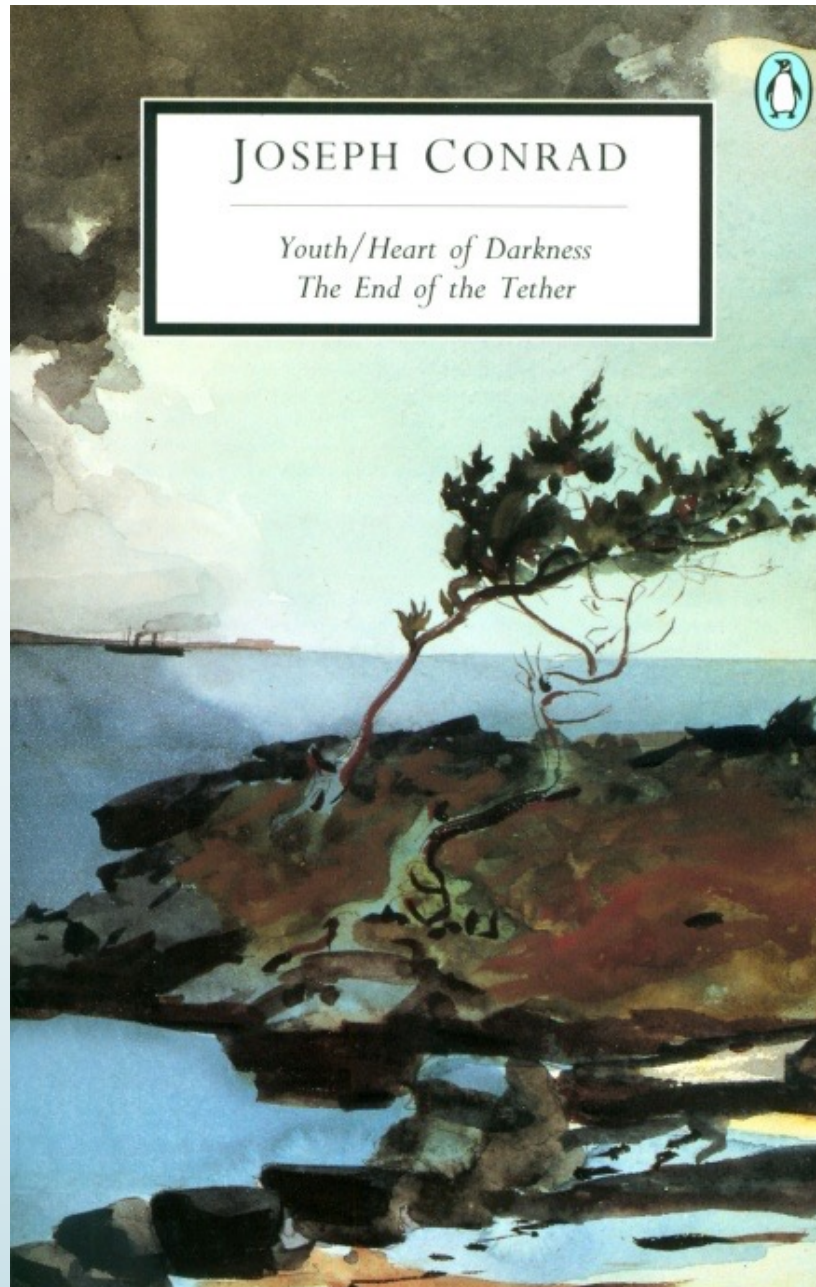


Source: Tropenmuseum

## Natives, East Kalimantan 1890s



Source: Tropenmuseum



# SINGAPORE

## Johnson's Pier 1890



Source: KITLV

## Harbour 1890



Source: KITLV

## Boat Quay, Singapore 1890s



Source: New York Public Library

## Boat Quay, 1890



Source: KITLV

## Cavenagh Bridge, 1870s



Source: National Archives, Kew

## Singapore Street Scene 1901



Source: New York Public Library

## Singapore 1890s



Source: Public Domain

## Raffles Place, 1890



Source: KITLV

## High Street, 1890



Source: Public Domain

## The Esplanade, 1890



Source: KITLV

## St Andrews Cathedral, 1900



Source: Public Domain

## Coolies, 1890



Source: KITLV

## Singapore Street Scene 1900s



Source: Public Domain

## Singapore River 1890s



Source: Yeo Ong Heng

## Chinese Workmen, 1890



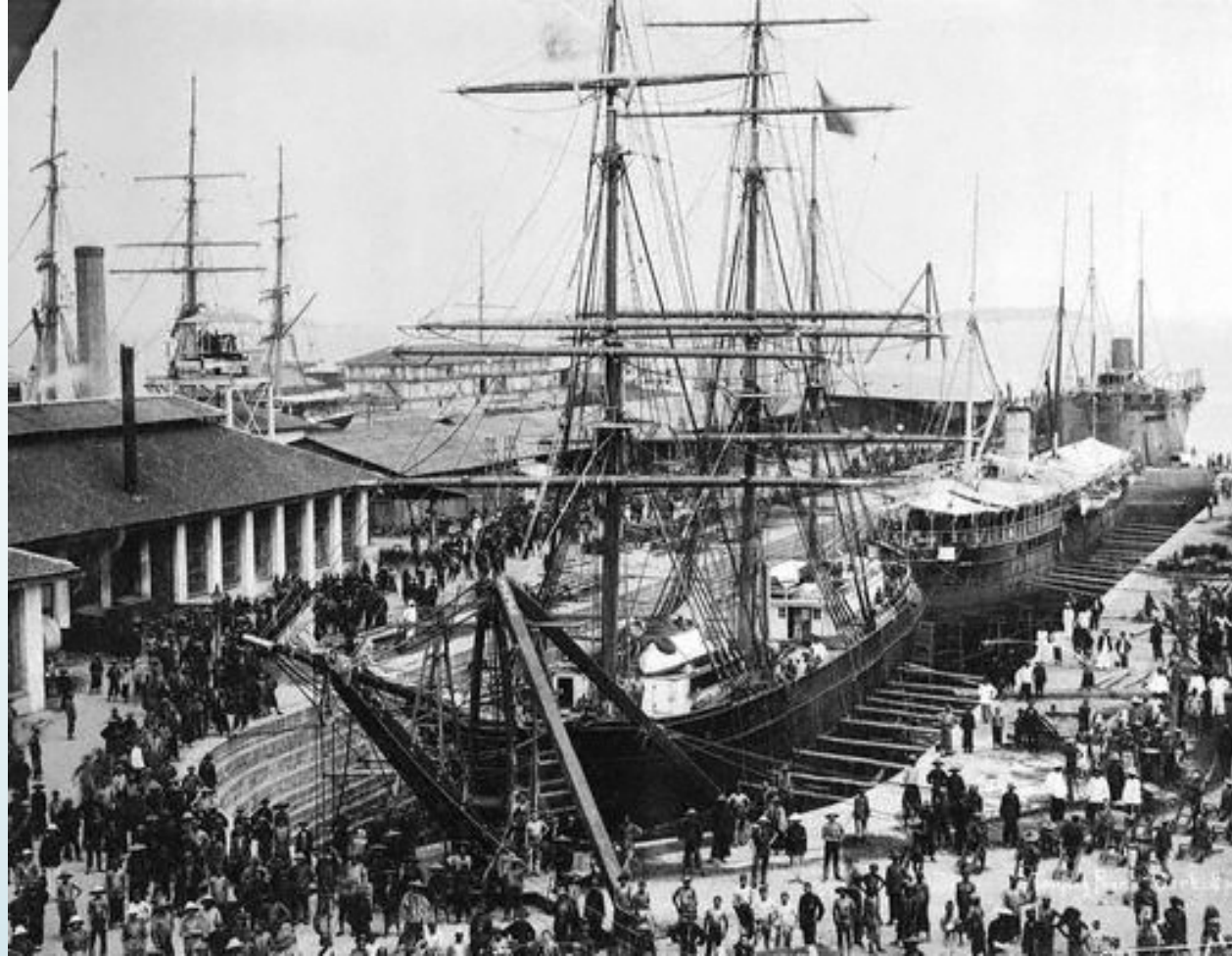
Source: New York Public Library

## Dutch Ship in Singapore 1890



Source: Public Domain

## Victoria Dock 1890



Source: KITLV

## Malays 1890



Source: KITLV

## Malay Village, Singapore 1890s



Source: Rijksmuseum

**Malay woman, 1890**

Source: KITLV

## Sailor, Singapore 1890



Source: KITLV

## European Family, 1890



Source: KITLV

## Chinese Boy, and Man 1890



Source: KITLV

## European Men, Singapore 1890



Source: KITLV

## Hadrami Arabs, 1890



Source: KITLV

## Hotel de l' Europe 1895

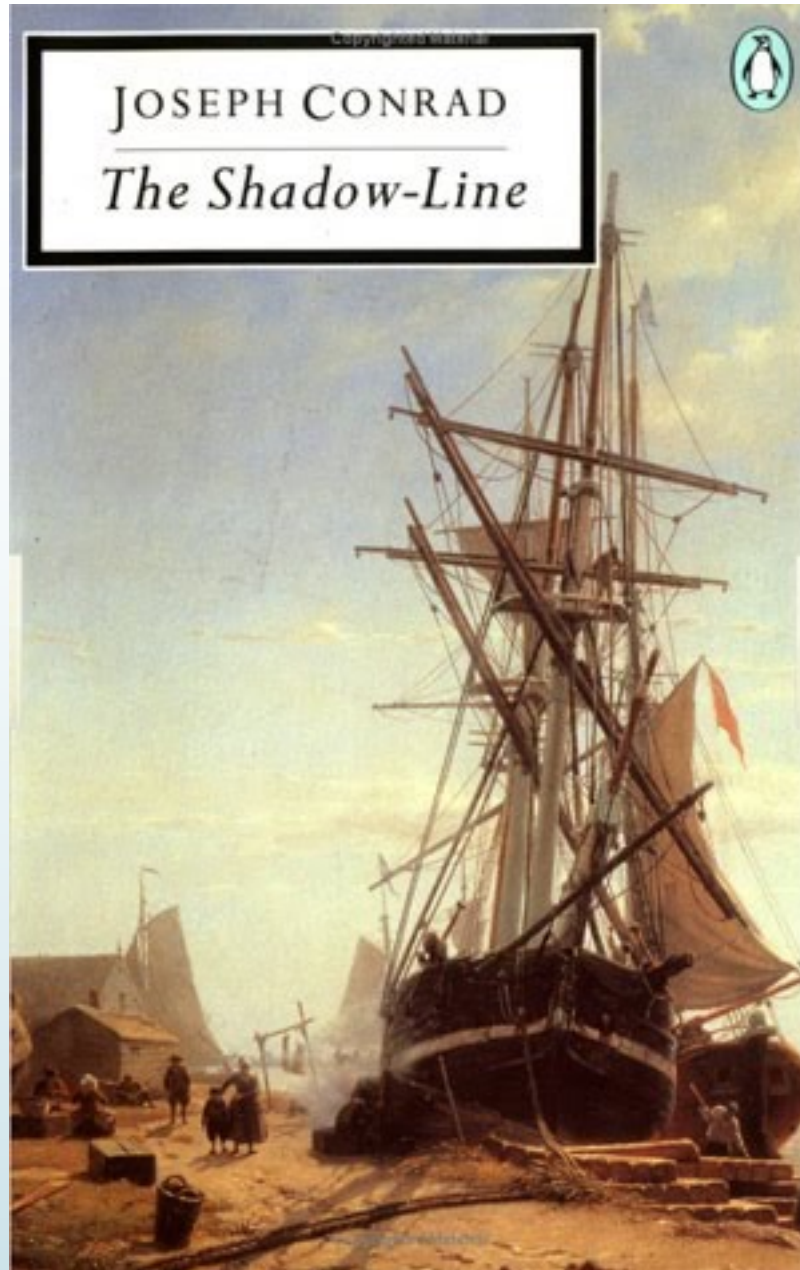


Source: KITLV

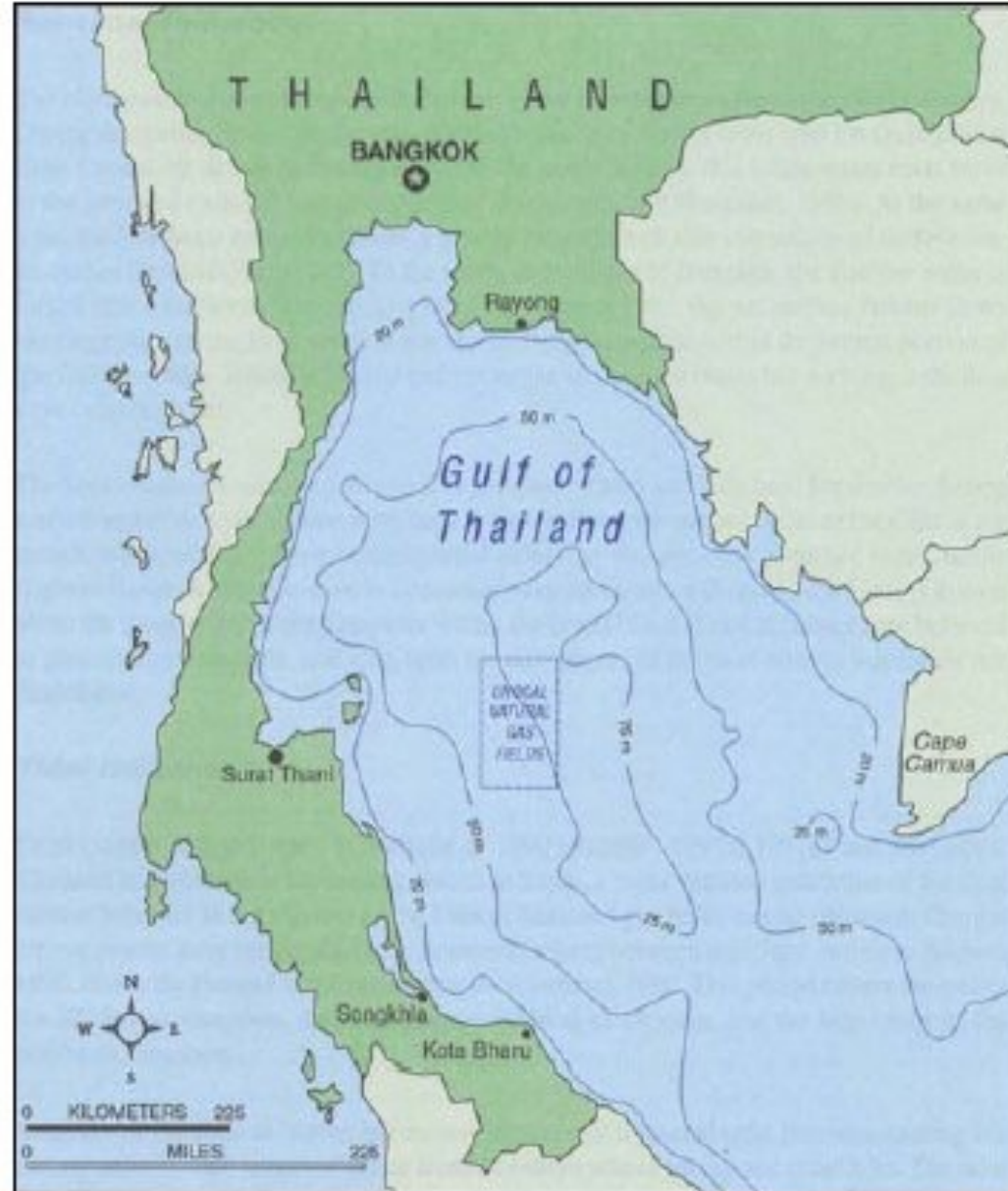
## Haj Pilgrims, Tanjung Priok 1930



Source: Tropenmuseum



## BANGKOK

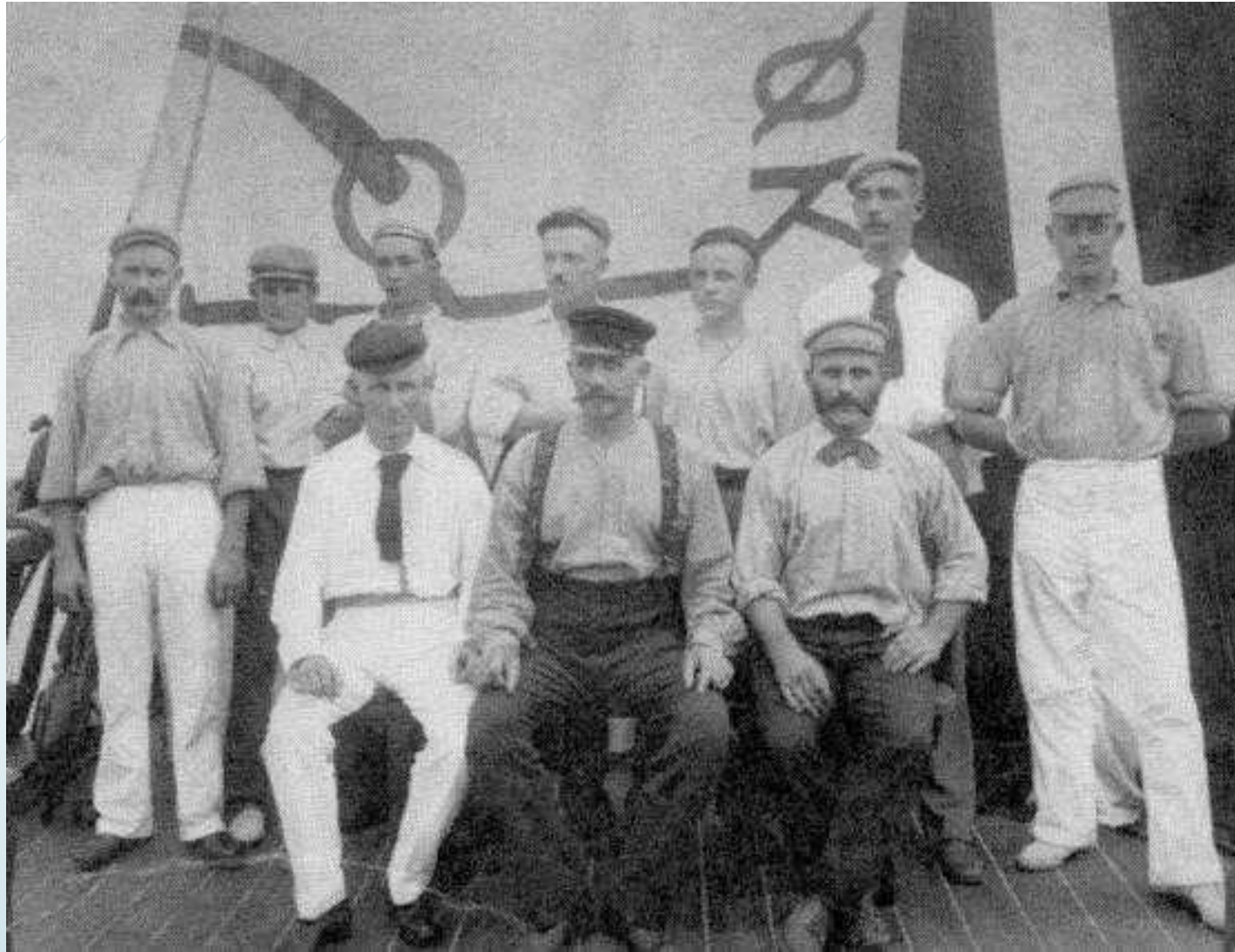


## Bangkok 1890s



Source: Public Domain

## East Asiatic Line



Source: Poul Tingleff, EAC

## Bangkok 1900s



Source: New York Public Library

## Bangkok 1910s



Source: Public Domain

## East Asiatic Company, Bangkok 1900



Source: payer.de

## The Oriental, Bangkok 1900s



Source: Unknown

**120 YEARS LATER**

## Makassar

## Makassar 2014



Source: Fabio Achilli

## Makassar 2017



Source: Rainer Jehl

## Makassar 2018



Source: Hazeimi Rafsanjani

## Makassar 2023



Source: [theonearmedcrab.com](http://theonearmedcrab.com)

## Makassar 2023



Source: [theonearmedcrab.com](http://theonearmedcrab.com)

## Bogor (Buitenzorg)

**Bogor 2017**

Source: Sree Kumar

## Bogor 2017



Source: Sree Kumar

Bogor 2017



Source: Sree Kumar

## Bogor 2017



Source: Sree Kumar

## Jakarta (Batavia)

## Jakarta 2010



Source: Affan Fadhlán

## Jakarta 2018



Source: Muhammad Rizki

## Jakarta History Museum (Stadhuis) 2023



Source: Sree Kumar

## Jakarta Old Town 2023



Source: Sree Kumar

## Jakarta Old Town 2023



Source: Sree Kumar

## Sunda Kelapa 2023

136



Source: Sree Kumar

## Jakarta, Sunda Kelapa 2023

137



Source: Sree Kumar

**Surabaya**

## Surabaya 2018

139



Source: Sree Kumar

## Surabaya 2018



Source: Sree Kumar

## Surabaya 2018



Source: Sree Kumar

## Surabaya 2018

142



Source: Sree Kumar

## Surabaya – Arab Quarter 2018



Source: Sree Kumar

## Surabaya 2018



Source: Sree Kumar

## Surabaya Kali Mas 2018

145



Source: Sree Kumar

## Surabaya Port 2020



Source: Hernawan Widhi

**Semarang**

## Semarang 2016



Source: Unknown



Source: Sree Kumar

## Semarang 2018



Source: Sree Kumar

## Banjarmasin

## Banjarmasin 2010



Source: Ezagren

## Banjarmasin 2010



Source: Harri J

## Banjarmasin 2010



Source: Harri J

## Samarinda

## Samarinda 2010



Source: Ezagren

## Samarinda 2010



Source: Ezagren

## Samarinda 2010



Source: Ezagren

## Berau and Tanjung Redeb

## Berau 2022



Source: Kabenioo

## Merabu Village, Berau



Source: Derawan, Indonesia Tourism

## Merabu Village 2013



Source: Franly Oley

## View from Merabu Village, 2013



Source: Franly Oley

## Tanjung Redeb 2010



Source: Public Domain

## Tanjung Redeb, 2012



Source: ANTARA, Kaltim

**Bangkok**

## Bangkok 2013



Source: Nik Cyclist, Bangkok

## Bangkok 2018



Source: Andreas Brucker

## Bangkok 2020

169



Source: Bradley Prentice

## Bangkok 2017



Source: Connor Williams

## East Asiatic Company 2016



Source: Sree Kumar

## Oriental Hotel 2016



Source: Sree Kumar

**Singapore**

## Singapore 2010



Source: KITLV

## Singapore 2017

175



Source: William Cho

## Singapore River 2019



Source: Sree Kumar

## Boat Quay 2019



Source: Sree Kumar

## Capitol Building 2019



Source: Sree Kumar

## Singapore 2019

179



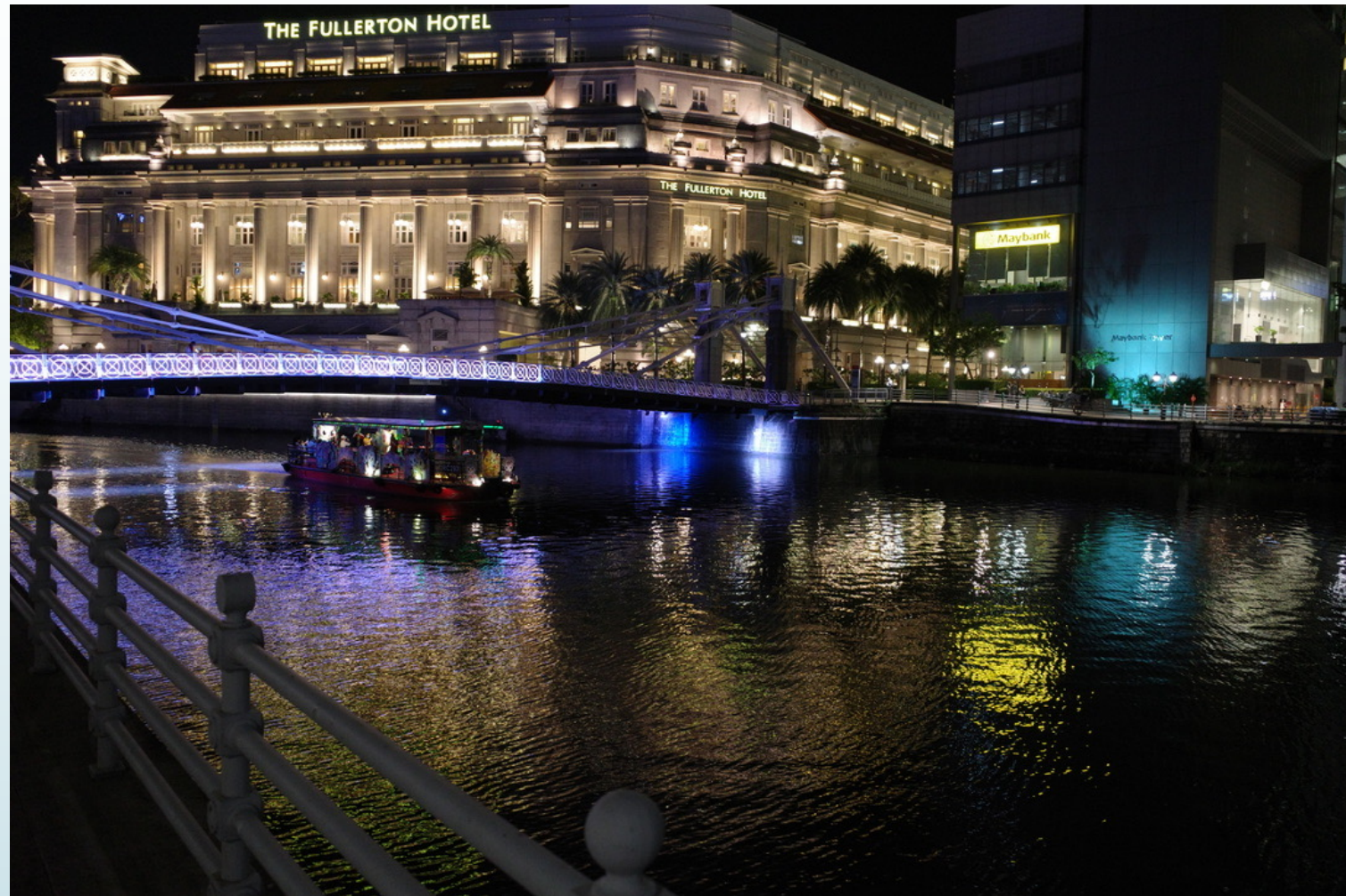
Source: Sree Kumar

## Singapore 2021



Source: Sree Kumar

## Singapore 2023



Source: Sree Kumar

## Conrad Plaque at Fullerton 2023



Source: Sree Kumar

END